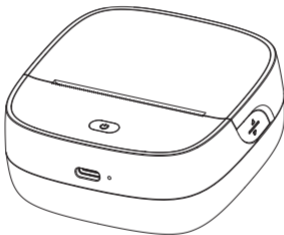


AIYIN

PORTABLE WIRELESS THERMAL PRINTER B23 Series



Please read the instruction manual carefully before using the product.

Version:1.0

INSTRUCTION MANUAL

01.Item Checklist



Printer*1



Type-C Cable*1



Paper*1
(In printer)

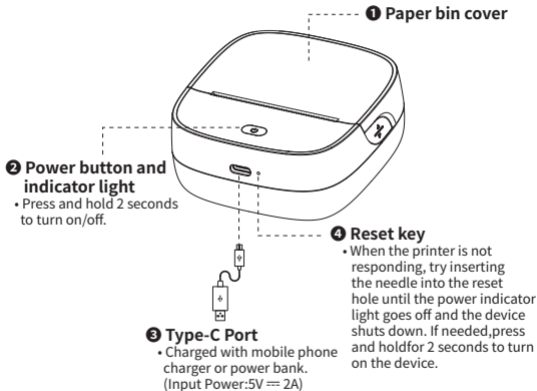


Instruction Manual*1

02.Specifications

Name	Portable Wireless Thermal Printer
Model	B23
Consumable Max Width	56mm(2.2")
Supported Consumable	Recording paper,Recording sticker,Label paper
Resolution	203dpi
Communication Port	Bluetooth
Power Supply	Type-C 5V $\bar{\bar{=}}$ 2A
Product Dimensions	89*86*39mm(3.5"*3.39"*1.54")

03.Product Introduction



04.Charging Introduction

- Please connect one end of the included USB cable to the device and the other end to a 5V \equiv 2A adapter or computer USB port for charging;
- Charge time: about 3 hours;
- We recommend you to use Mobile phone chargers for charging;
- If not used for a long time, please charge once every 3 months to avoid long-term natural loss of lithium battery can not be charged.



NOTE

- Working environment: Use at the ambient temperature of 5°C-40°C;
- Caution! This product doesn't contain power adapter. If consumers use a power adapter for power supply, please buy a power adapter that has obtained CE and FCC certification and meets the standard requirements. The output specifications of the adapter shall comply with 5V \equiv 2A.

05.How to Use Usage Overview



05.How to Use ① APP Download

Method 1:

Search for [AiYin] on Google Play or App Store.



Method 2:

Scan the following QR code to download App.



NOTE

- This product needs to be connected to the printer in the App;
- Due to the requirements of mobile phone system,the Android mobile phone will use the user's geographic location when connecting,so that the user needs to turn on the GPS and confirm the authorization;
- This app only supports phones with Android 7.0 or iOS 11.0 or above systems.

05.How to Use ② Printer Startup

Press and hold the power button of the printer for 2 seconds to turn on the printer.



Power Button Description

Button	Operation	Functions
Power button	Hold for 2 seconds	Power on/off
	Press twice	Print diagnostic page and the QR code to connect the printer with smart phone App
	Press once	The label will runout and stay in the gap

Indicator Light

Light	Functions
Light steady on	Bluetooth connected
Light flashing slowly	Bluetooth disconnected
Green light on	Normal use status /Full charged
Red light on	Cover opened/Nopaper/Over-heat
Yellow light on	Low battery,please charge in time
Yellow light flashing quickly	Charging



Auto power off: The printer will automatically power off after 20 minutes without operation. You can set the timer in the App.

05.How to Use ③ Connected Printer



① Open AiYin App.

② Click to search for printer Bluetooth and connect.

or scan the device connection QR code by printing from printer after double clicking the power button.

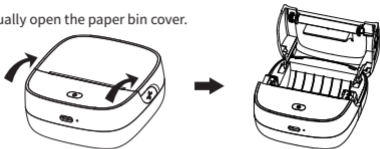


NOTE

- When connecting device in the App, please make sure that your printer is turned on and Bluetooth of your mobile phone is turned on;
- Due to the requirements of mobile phone system, the Android mobile phone will use the user's geographic location when connecting, so that the user needs to turn on the GPS and confirm the authorization;
- Please pair Bluetooth in the app, do not pair Bluetooth in the phone settings;
- If you need a PIN code, please enter 0000.

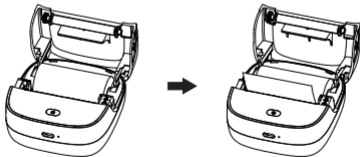
05.How to Use ④ Installation Consumables

Manually open the paper bin cover.

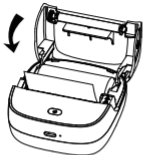


① Open cover.

Load the paper with the print face down into the paper bin.



② Put paper in.



Close the paper compartment cover.
Please make sure to leave 0.1-0.2
inches of label paper on the outside.

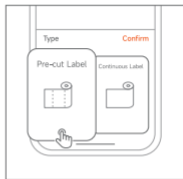


3 Close the cover.

05.How to Use ⑤ Edit Print



① Open the App and select the correct paper size.



② Select printing method for editing.



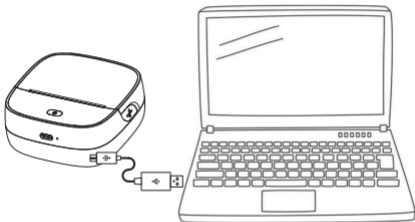
③ Edit printing content.



④ Click the print after editing.

06.Driver installation

1. Turn on the printer and connect the machine to the computer using the included USB cable.

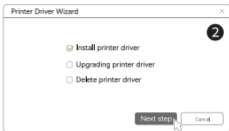
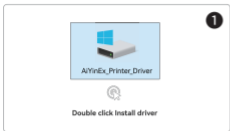


NOTE

Please turn on the printer before connecting it to the computer.

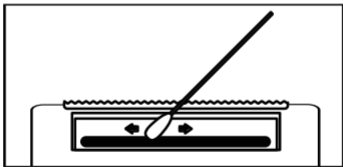
2. Please go to www.aiyin.com to download the driver.
(Tip: Download the appropriate driver package according to your computer system)

3. Decompress the driver package, double-click it, and install the driver as prompted.



07.Clean the Printer Head

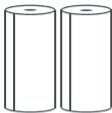
- 1 Please turn off the printer and open the printer cover and take out the paper.
- 2 Dip a cotton cloth or cotton swab with medical alcohol, and wipe gently along the center to the periphery of the printer head.
- 3 After cleaning the printer head, do not use the printer immediately. Please wait for 1 to 2 minutes, and then use the printer after the alcohol has completely evaporated.



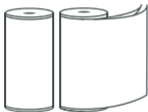
NOTE

• Please do not directly touch the printing head to avoid damage. Especially, do not directly touch the printing head immediately after printing to avoid overheating and scalding.

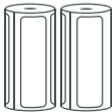
08. Thermal Paper Introduction



Recording paper
Diameter 30mm
Three-proofing (moisture proofing, salt spray proofing and fungus proofing),
free of Bisphenol A



Recording sticker
Diameter 30mm
Three-proofing, free of Bisphenol A



Label paper
Diameter 30mm
Three-proofing, free of Bisphenol A

09.FCC Warning

This device complies with part 15 of the FCC Rules.Operation is subject to the following two conditions:

(1)This device may not cause harmful interference,and
(2)this device must accept any interference received,including interference that may cause undesired operation.Any Changes or modifications not expressly approved by the party responsible for compliance could void the user's authority to operate the equipment.This equipment has been tested and found to comply with the limits for a Class B digital device,pursuant to part 15 of the FCC Rules.These limits are designed to provide reasonable protection against harmful interference in a residential installation.This equipment generates uses and can radiate radio frequency energy and,if not installed and used in accordance with the instructions,may cause harmful interference to radio communications. However,there is no guarantee that interference will not occur in a particular installation.If this equipment does cause harmful interference to radio or television reception,which can be determined by turning the equipment off and on,the user is encouraged to try to correct the interference by one or more of the following measures:

- Reorient or relocate the receiving antenna.
- Increase the separation between the equipment and receiver.
- Connect the equipment into an outlet on a circuit different from that to which the receiver is connected.
- Consult the dealer or an experienced radio/TV technician for help.The device has been evaluated to meet general RF exposure requirement.The device can be used in portable exposure condition without restriction.

10.IC Warning

IC Caution:

Radio Standards Specification RSS-Gen, issue 5-English:

This device contains licence-exempt transmitter(s)/receiver(s) that comply with Innovation, Science and Economic Development Canada's licence-exempt RSS(s).

Operation is subject to the following two conditions:

This device may not cause interference.

This device must accept any interference, including interference that may cause undesired operation of the device.

RF exposure statement:

The device has been evaluated to meet general RF exposure requirement. The device can be used in portable exposure condition without restriction.

-French:

Cet appareil contient des émetteurs /récepteurs exemptés de licence conformes aux RSS (RSS) d'Innovation, Sciences et Développement économique Canada.

Le fonctionnement est soumis aux deux conditions suivantes:

Cet appareil ne doit pas causer d'interférences.

Cet appareil doit accepter toutes les interférences, y compris celles susceptibles de provoquer un fonctionnement indésirable de l'appareil. Déclaration d'exposition RF:

L'appareil a été évalué pour répondre aux exigences générales d'exposition aux RF.

L'appareil peut être utilisé dans des conditions d'exposition portable sans restriction.

Thanks for choosing us!

Customer Support

Please kindly contact us if you have any trouble or question when installing and using.



support@aiyin.com



www.aiyin.com



help.aiyin.com

How can we help you today?

Enter your questions here 

Scan the following QR code to talk with us



at 10am to 10pm EST

Scan or upload this QR code using the WhatsApp camera to add us

Manufacturer: Xiamen AiYin Technology Co., Ltd.